

4

3

2

1

REVISIONS				
ZONE	REV	DESCRIPTION	DATE	APPROVED

POWER REQUIREMENTS
 12 - 24 VAC or VDC
 12V MINIMUM
 24V MAXIMUM
 500mA MINIMUM
 RECOMMENDED

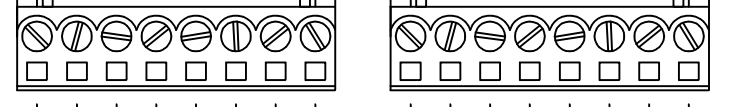
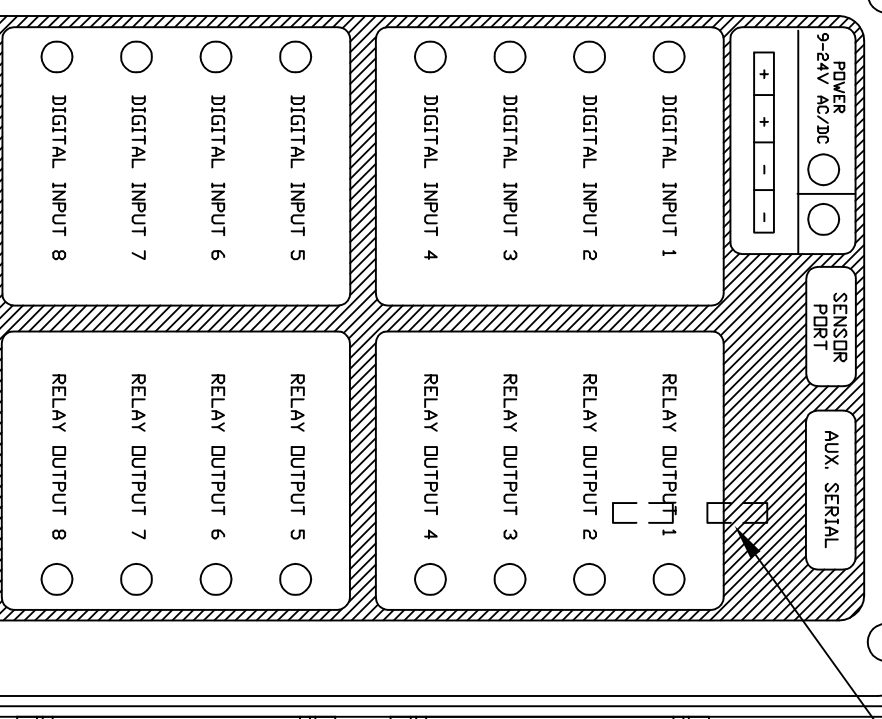
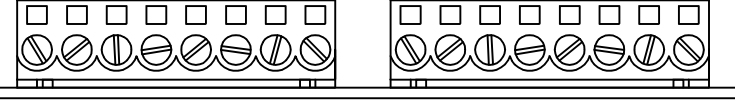
POSITIVE POWER LEADS
 INTERCONNECTED INTERNALLY;
 NEGATIVE POWER LEADS
 INTERCONNECTED INTERNALLY.

AC/DC POSITIVE (+) POWER
 AC/DC POSITIVE (+) POWER
 AC/DC NEGATIVE (-) POWER
 AC/DC NEGATIVE (-) POWER

RS232 AUX PORT
 DB9F
 PIN 2 - TX (OUTPUT)
 PIN 3 - RX (INPUT)
 PIN 5 - GND
 PIN 7 - RTS (INPUT)
 PIN 8 - CTS (OUTPUT)

RELAY OUTPUT 1 & 2
 JUMPER CONFIGURATION
 NORMAL CLOSED (N.C.) POS 1-2
 NORMAL OPEN (N.O.) POS 2-3 (DEFAULT)

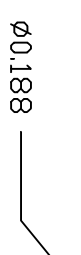
- INPUT 1 (+)
- INPUT 1 (-)
- INPUT 2 (+)
- INPUT 2 (-)
- INPUT 3 (+)
- INPUT 3 (-)
- INPUT 4 (+)
- INPUT 4 (-)
- INPUT 5 (+)
- INPUT 5 (-)
- INPUT 6 (+)
- INPUT 6 (-)
- INPUT 7 (+)
- INPUT 7 (-)
- INPUT 8 (+)
- INPUT 8 (-)



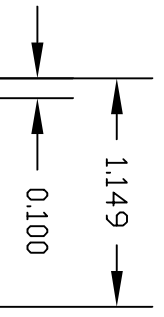
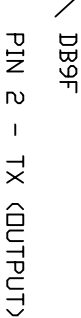
- OUTPUT 1 - N/D CONTACT
- OUTPUT 1 - N/D CONTACT
- OUTPUT 2 - N/D CONTACT
- OUTPUT 2 - N/D CONTACT
- OUTPUT 3 - N/D CONTACT
- OUTPUT 3 - N/D CONTACT
- OUTPUT 4 - N/D CONTACT
- OUTPUT 4 - N/D CONTACT
- OUTPUT 5 - N/D CONTACT
- OUTPUT 5 - N/D CONTACT
- OUTPUT 6 - N/D CONTACT
- OUTPUT 6 - N/D CONTACT
- OUTPUT 7 - N/D CONTACT
- OUTPUT 7 - N/D CONTACT
- OUTPUT 8 - N/D CONTACT
- OUTPUT 8 - N/D CONTACT

RS232 COMMAND (CMD) PORT
 3-WIRE COMMUNICATIONS 115,200 BAUD
 DB9F
 PIN 2 - TX (OUTPUT)
 PIN 3 - RX (INPUT)
 PIN 5 - GND

0.310

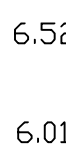


φ0.188



1.149
 0.100

6.520



6.014



D

C

B

A

D

C

B

A

4

3

2

1

INTEG process group, inc (C) Copyright 2015, All Rights Reserved			
JNDR Model 410 A00-00133 Connections & Mounting			
SIZE	FSOM NO.	DWG NO.	REV
C			--
SCALE	1:1	DATE	5/5/2015
SHEET		1	OF 1