

Sending Macro Names from the Doremi to Cinema.JNIOR

Last Updated December 1, 2009

The Cinema.JNIOR program can execute macros stored on the JNIOR by receiving the name of the macro from the Doremi digital cinema server.

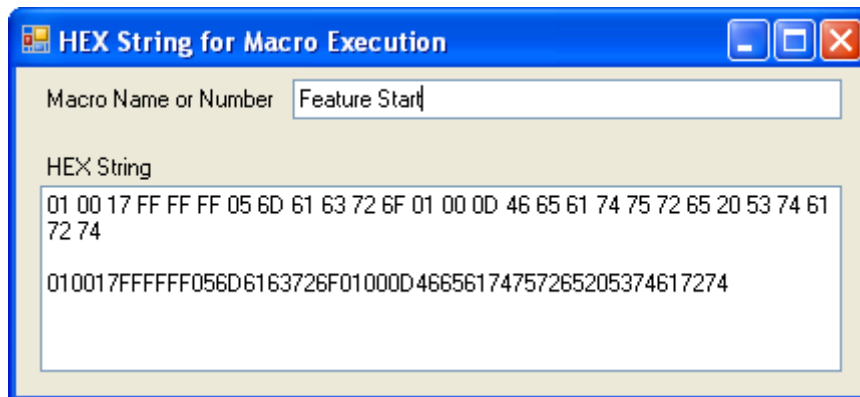
As of the date of this application note and based on the version of Doremi software available (firmware version 21.1v, software version 0.5.4-2), the macro name must be sent using a hex string. A tool is provided by INTEG that converts a macro name to the appropriate hex string for use in the Doremi.

The following example explains how to create a macro in the Doremi that contains an Action that will send the macro name Feature Start to the JNIOR.

The macro name is sent to the JNIOR using a Send a Message Action type. The Message Label should correspond to the macro name on the JNIOR so you can remember the macro being used. Select the JNior Device name. The Message Type is Binary. The Message to be sent is the macro name stored on the JNIOR converted to a hex string that also includes the necessary JNIOR protocol hex commands.

The Message (hex string) is created using the INTEG provided software tool. The macro name to be sent is not case sensitive, but the hex string is a function of the case used when entering the name into the INTEG tool. So to create the exact same hex string again, the case must be typed exactly the same.

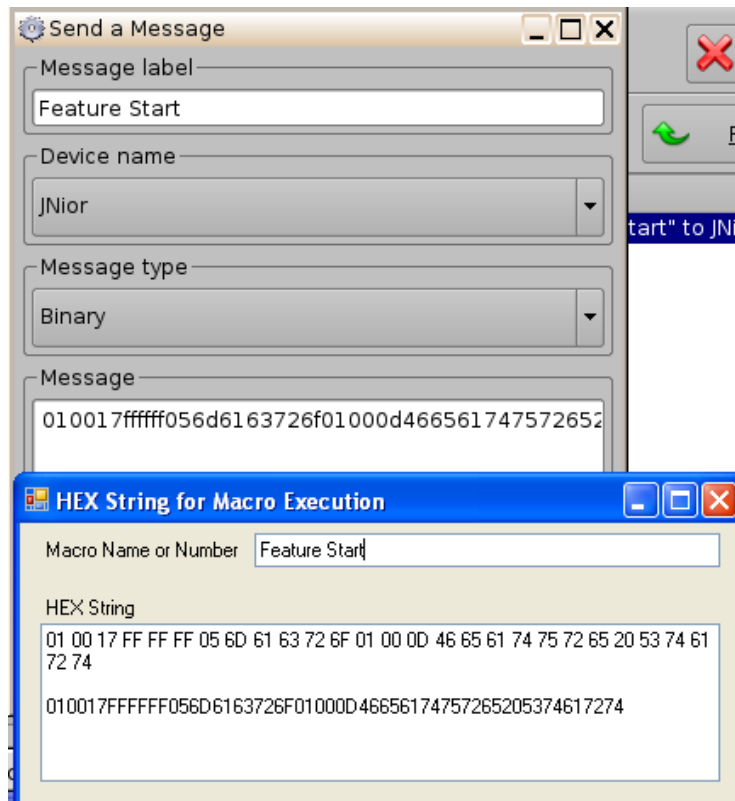
Below is the INTEG Hex String Generator. Please enter the hex string WITHOUT spaces into the Doremi. The spaces are provided for ease of manually copying the string from the tool to the Doremi.



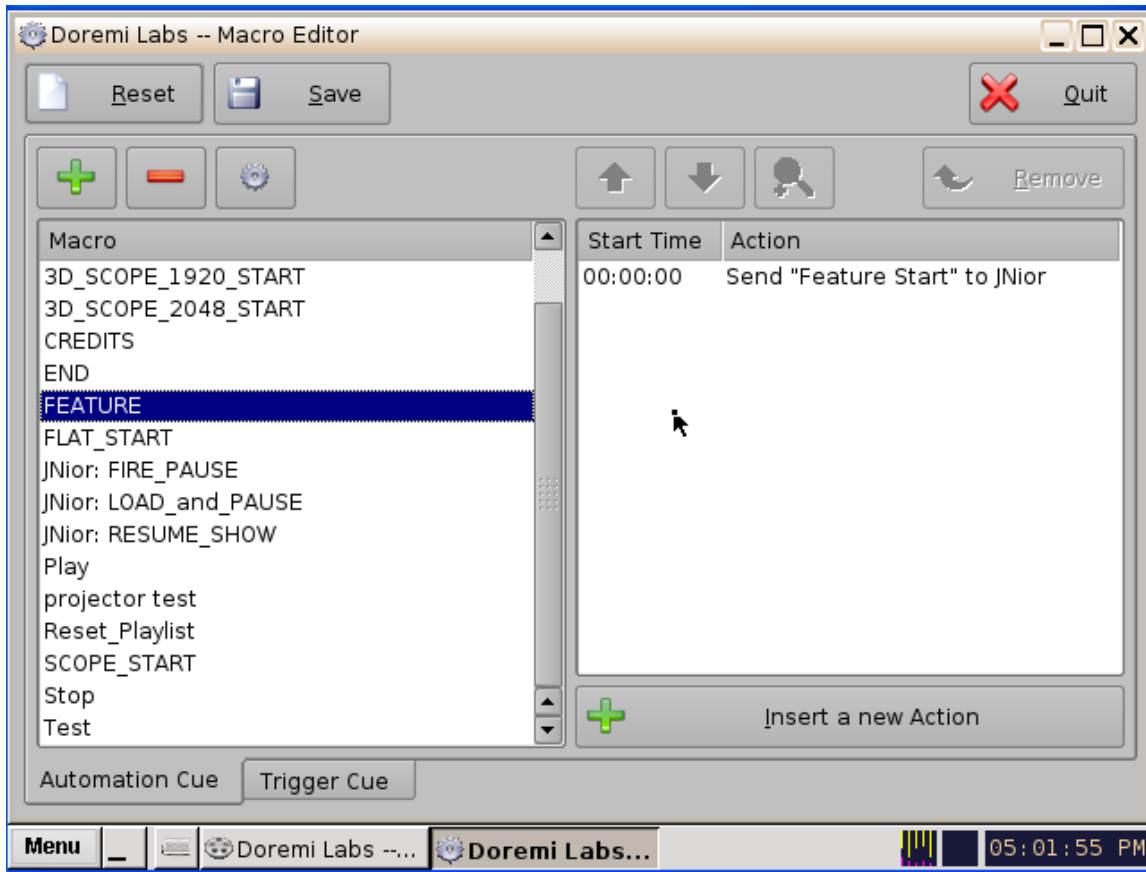
Below is the Doremi Action containing the hex string.



Below the two are overlaid for comparison.



Below is the completed Doremi macro.



Please contact INTEG via e-mail at INTEGsales@integpg.com or via phone at 724-933-9350 extension 20 with any questions.