

Using the GDC Cinema Server with the JNIOR 410/412

Last updated: July 1, 2015

The following information describes the slight difference in utilizing the JNIOR Models 410 and 412 with the GDC Cinema Server when compared to the JNIOR 310 and 312.

Please contact INTEG via e-mail at rshulkosky@integpg.com or via phone at 724-933-9350 extension 20 with any questions.

Instructions

The GDC can interact and control the JNIOR 410/412 via two methods. You can use one method or both methods.

- 1) Make a Modbus connection to the JNIOR using port 502 on the JNIOR.
- 2) Use the Cinema.JAR program to have the GDC send specific commands, like 'run macro', to the JNIOR.

This document describes how to enable the Modbus server on the JNIOR and it is ONLY required if you are using method 1 described above.

If you are using the Cinema.JAR program described in method 2 above, it works the same as the Cinema.JNIOR program used on the JNIOR 310/312. Please consult the Cinema manual for additional details.

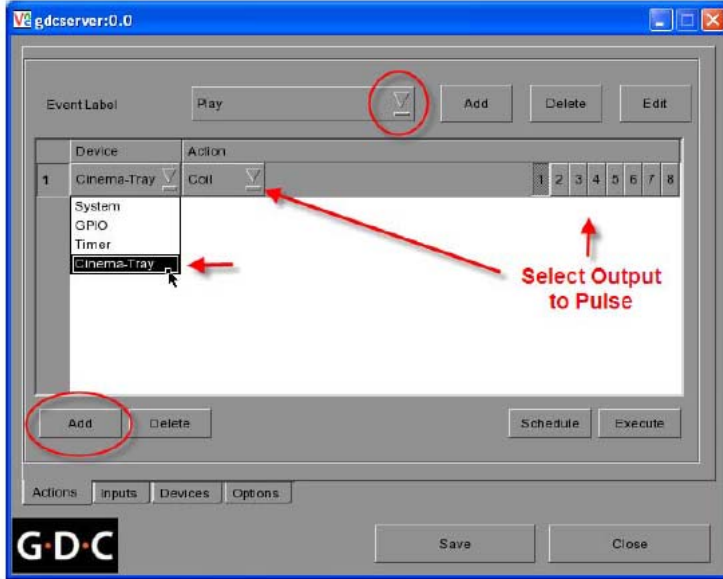
For method 1, the GDC Cinema Server makes a connection to the JNIOR using the Modbus protocol for direct relay control. With the JNIOR Models 310 and 312, the Modbus Server was 'enabled' and running by default. With the new JNIOR Models 410 and 412, the Modbus Server is 'disabled' and not running by default.

Therefore, when you first install your JNIOR 410/412, you MUST enable the Modbus Server to work with the GDC Cinema Server if you are using Method 1 described above.

You can enable the Modbus Server by:

- 1) Downloading the Update project located on our website on the following web page: <http://www.integpg.com/support/cinema-jnior/>
- 2) Going to the JNIOR Configuration web page and checking a box
- 3) Entering a Registry Key via a Telnet/Command Line session.

To make sure you understand what we mean by Method 1, below is a screen picture of an example using Method 1 showing how to configure the COIL command on the GDC. This command will directly control relay output 1 on the JNIOR using the Modbus protocol.



using the Modbus connection allows you to control the JNIOR relay outputs using the COIL command

Setting the Modbus Run Key

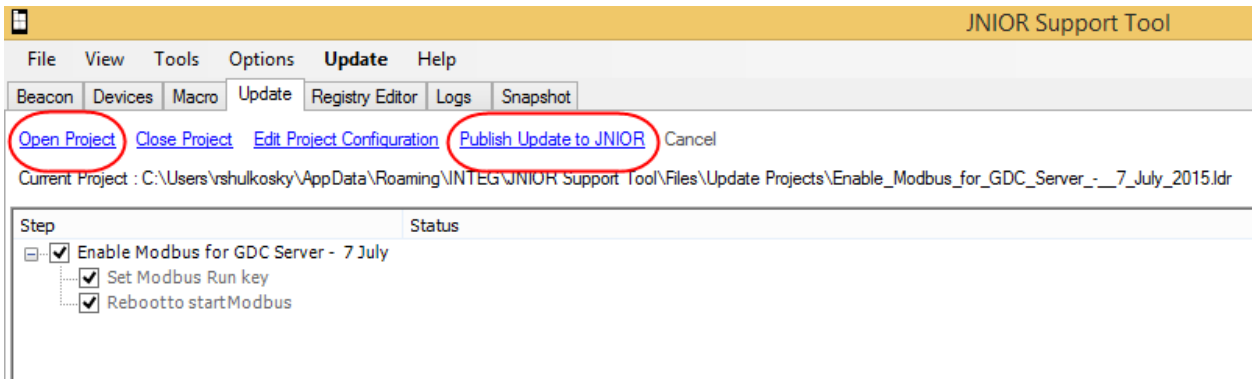
1) Using the JNIOR Update Project

You can download an Update project from the INTEG website at the following link.

<http://www.integpg.com/support/cinema-jnior/>

NOTE: Please download the zip file, but do NOT unzip it. Open the JNIOR Support Tool, go to the Update tab, click on Open Project and navigate to where you saved the zip file. Then click on Publish Update to JNIOR and select 1 or more JNIORs to update.

As shown below, this is a simple two-step update project that sets the Modbus run key and reboots the JNIOR to start the Modbus server. The advantage of using the update project is you can update one or all of your JNIORs at a specific location all at once. You can then use the update project at various theatre locations.



2) Using the JNIOR Web page

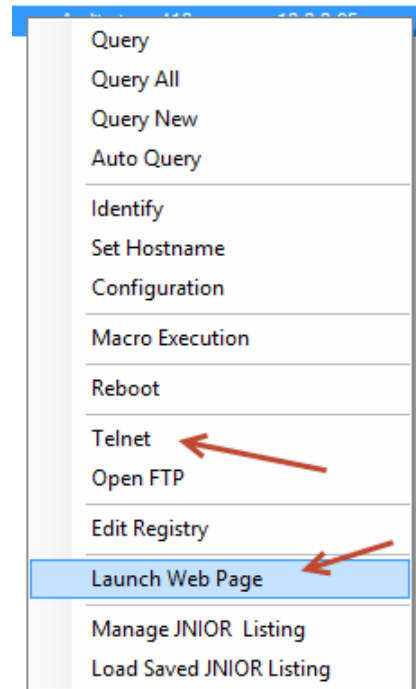
Please go to the Beacon tab in the JNIOR Support Tool and ‘right click’ on your JNIOR and select Launch Web Page. Or you can also just type your JNIOR IP address into your browser address line.

On the dynamic web page that first loads with the JNIOR 410 or 412, you will then need to launch the configuration web page.

Or you can go directly to the JNIOR Configuration web page by typing the following in your web browser:

x.x.x.x/configure

where x.x.x.x is your JNIOR IP Address

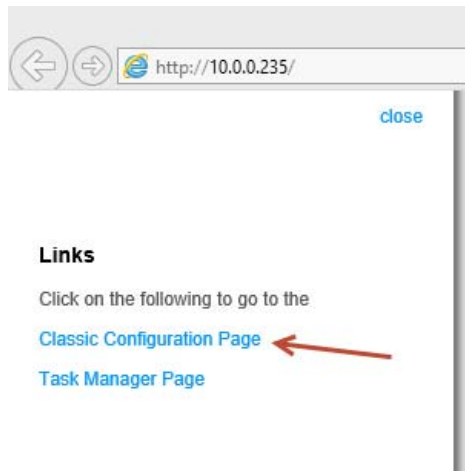


After selecting, Launch Web Page, the ‘dynamic’ JNIOR web page available with the Series 4 will be launched in your browser as shown below.

PLEASE NOTE: The dynamic web page requires a ‘modern web browser’ which is defined as Internet Explorer 10 or greater, Google Chrome or Firefox.



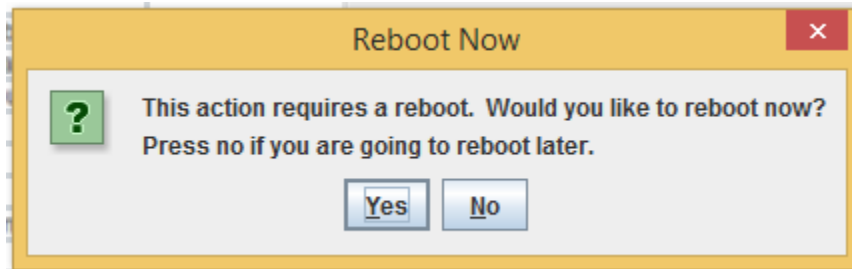
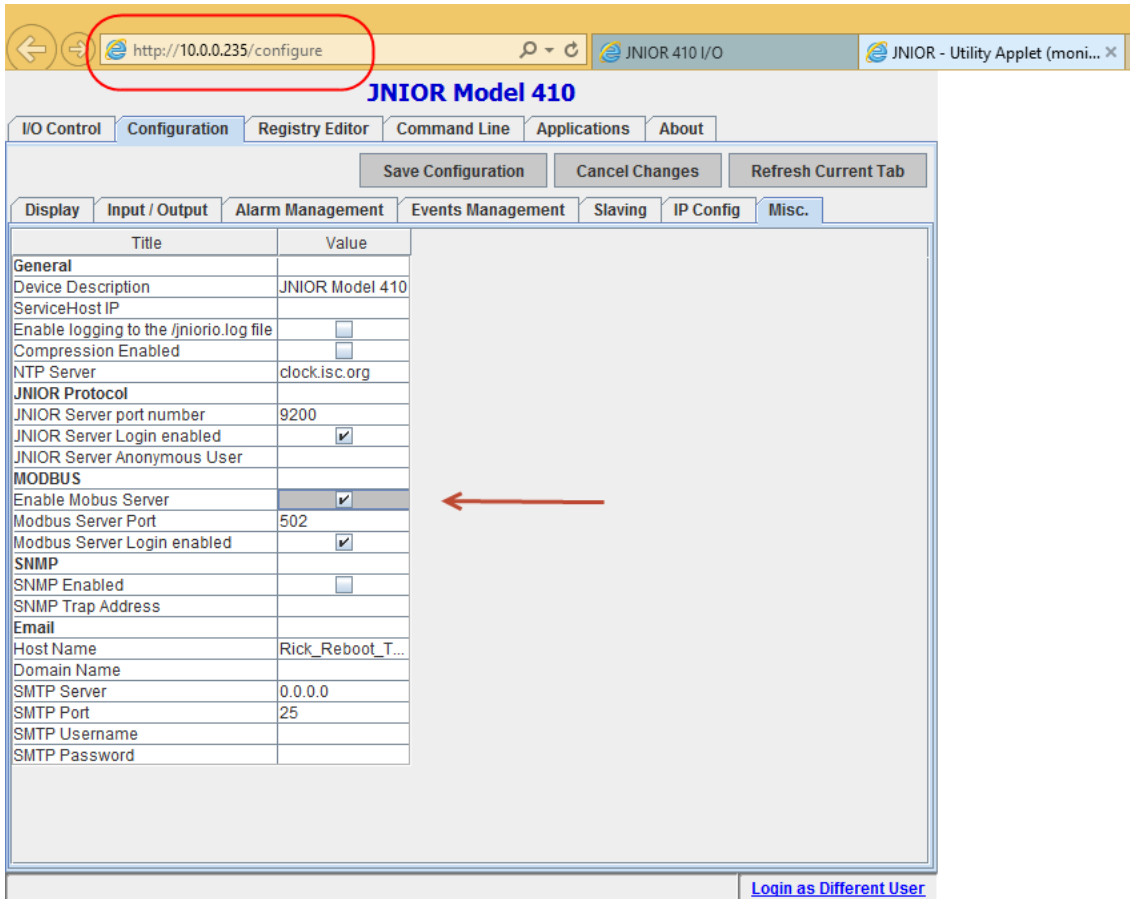
If you 'click' on the Show Menu link on the left side of the JNIOR dynamic web page, you will see the option to launch the Classic Configuration Web Page. This is the same web page that is used on the JNIOR 310/312. **It requires the Java plug-in on your PC to run.**



This will launch the typical (or 'classic') JNIOR web page used to Configure the JNIOR as shown below. Please go to the Configuration – Misc tab.

After you check the box to Enable Modbus Server, click on the Save Configuration button at the top of the web page and then click on the Yes button when asked to reboot the JNIOR.

The Modbus Server will be running on the JNIOR 410/412 when the reboot has completed and the GDC Cinema Server will be able to connect to the JNIOR.



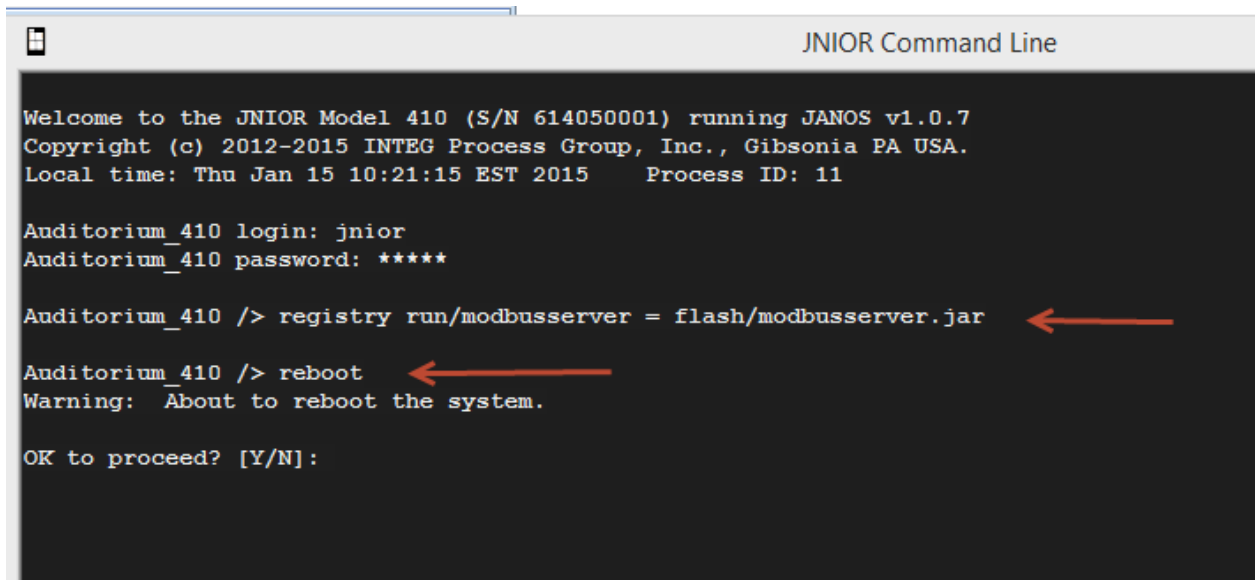
3) Using a Telnet/Command Line Session

If you launch a Telnet session, you will set the 'run' Registry Key so that the Modbus server will run each time the JNIOR boots up. Please type the following as shown in the screen picture below.

registry run/modbusserver = flash/modbusserver.jar

Then type **reboot** and enter a **Y** to reboot

After the reboot the Modbus server will be running.



```
JNIOR Command Line

Welcome to the JNIOR Model 410 (S/N 614050001) running JANOS v1.0.7
Copyright (c) 2012-2015 INTEG Process Group, Inc., Gibsonia PA USA.
Local time: Thu Jan 15 10:21:15 EST 2015    Process ID: 11

Auditorium_410 login: jnior
Auditorium_410 password: *****

Auditorium_410 /> registry run/modbusserver = flash/modbusserver.jar ←
Auditorium_410 /> reboot ←
Warning: About to reboot the system.

OK to proceed? [Y/N]:
```