

Notes on using Event Manager

Last updated: November 26, 2014

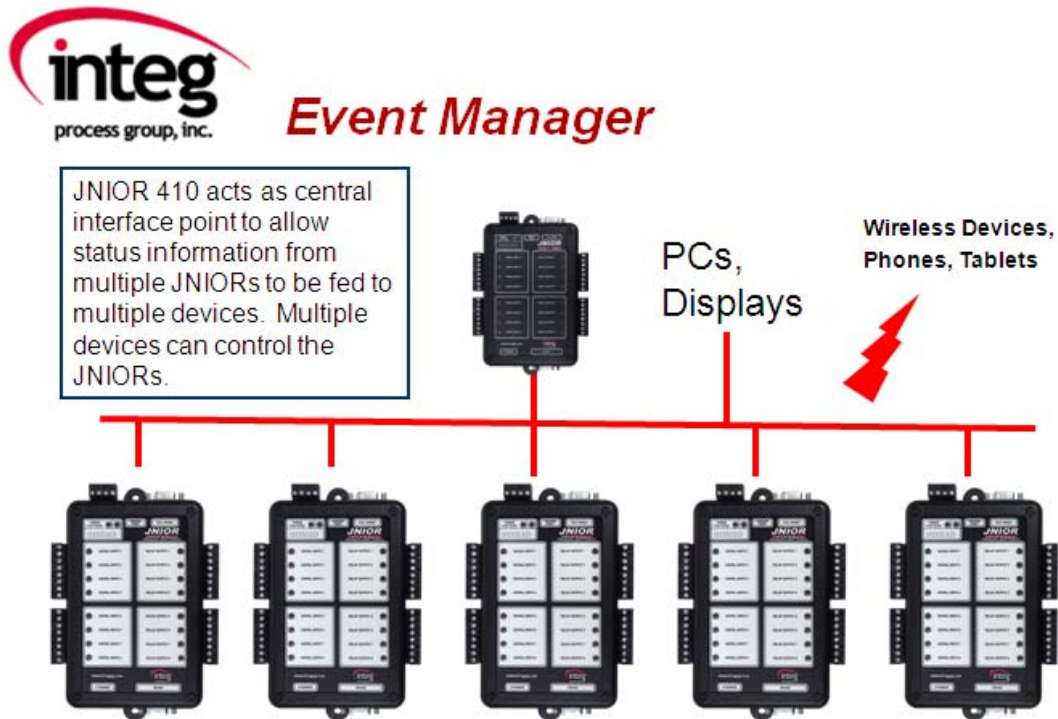
The following information describes how to configure and utilize the Event Manager software that allows you to monitor and manage multiple theatre auditoriums from a central location.

Please contact INTEG via e-mail at rshulkosky@integpg.com or via phone at 724-933-9350 extension 20 with any questions.

Overview

Event Manager is an application that interacts with JNIORs running Cinema.JNIOR via a JNIOR Model 410 or Model 412. Event Manager allows the user to view ‘status’ information about each auditorium by displaying it on a central PC using the PC application and in web browsers running on a PC, tablet, iPad, phone, etc. Event Manager can also be used to trigger macros on the JNIOR. These macros can be very simple or contain multiple actions.

NOTE: Wherever Model 410 is used throughout this document, it also implies Model 412. You can have JNIORs 310 or 312 or 410 or 412 controlling your auditorium and reporting to the central JNIOR 410 or 412.



Within each macro on the JNIOR, the user will add the 'status' messages that are sent to the Event Manager application. The status messages added to a macro file contain the format

Column Name = Message

In Event Manager, you will define the Column Names. In the Macro file, you will define the Message. The Action defined in the Macro tab will be for the internal device called CINEMA_MANAGER and there will be a 'Send' action. The data field will contain the Column Name = Message. For example, the macro could send Lights = Low to the Event Manager application. This would cause the word Low to be displayed in the column called Lights. **You can also send multiple messages in the same Send action.**

Event Manager also gives the user the capability to monitor and manage an intermission (**can be any timed event**) being controlled by the JNIOR. The length of the intermission can be defined and then macros can be defined to extend, shorten or stop the intermission timer. When the intermission timer completes, an end of intermission timer macro is executed.

To implement Event Manager, the user will need:

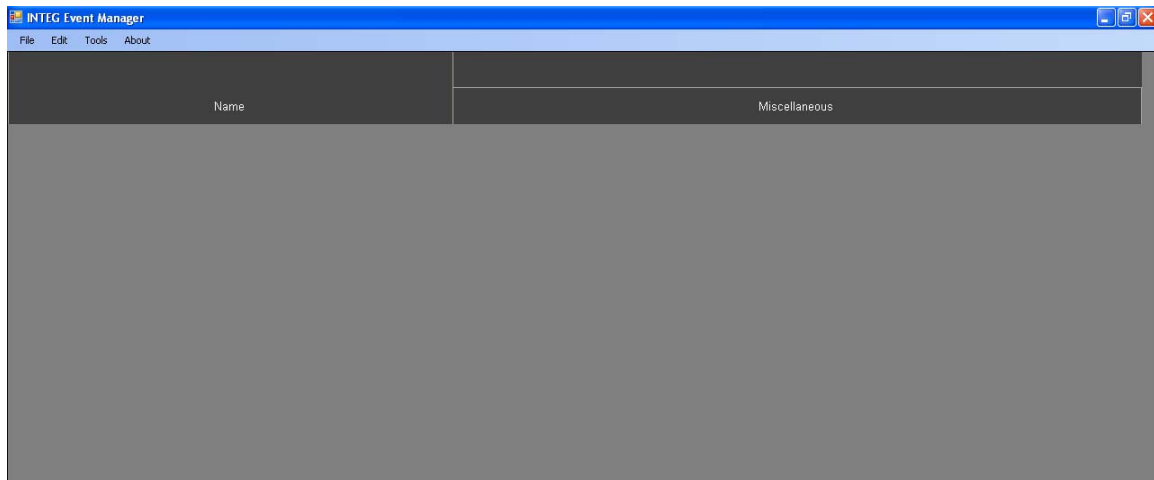
- the latest JNIOR Support Tool (version 6.2.313.756 or greater)
- the latest Cinema.JNIOR (version 2.26.718.1413 or greater) running on the 310/312
- the latest Cinema.JAR (version 2.0.4.242 or greater) running on the 410/412
- the Event Manager PC application (version 2.4.0.376 or greater)
- the XChange application (version 1.1.0.548 or greater) running on the JNIOR 410 or JNIOR 412

Event Manager

Event Manager PC application is distributed via an installation project (.msi file). Double click on the msi file to install the program on the PC. After the program is installed, you can launch the program by double-clicking on the short cut icon placed on your desktop or by going to the Start – All Programs – INTEG – Event Manager and selecting the Event Manager program.

After you launch Event Manager, the following screen will be displayed. The first time you launch Event Manager, you will need to configure the IP address of the JNIOR 410 that the PC application will connect to and you will also need to configure the columns for data to be displayed on the screen.

NOTE: The number of JNIORs (310/312) connected to the JNIOR 410 will be displayed in the lower left corner. This should also be the number of JNIORs (rows) displayed in the PC application. The lower right corner will display the session ID when the PC application has successfully connected to the JNIOR 410.



Creating Your Data Columns

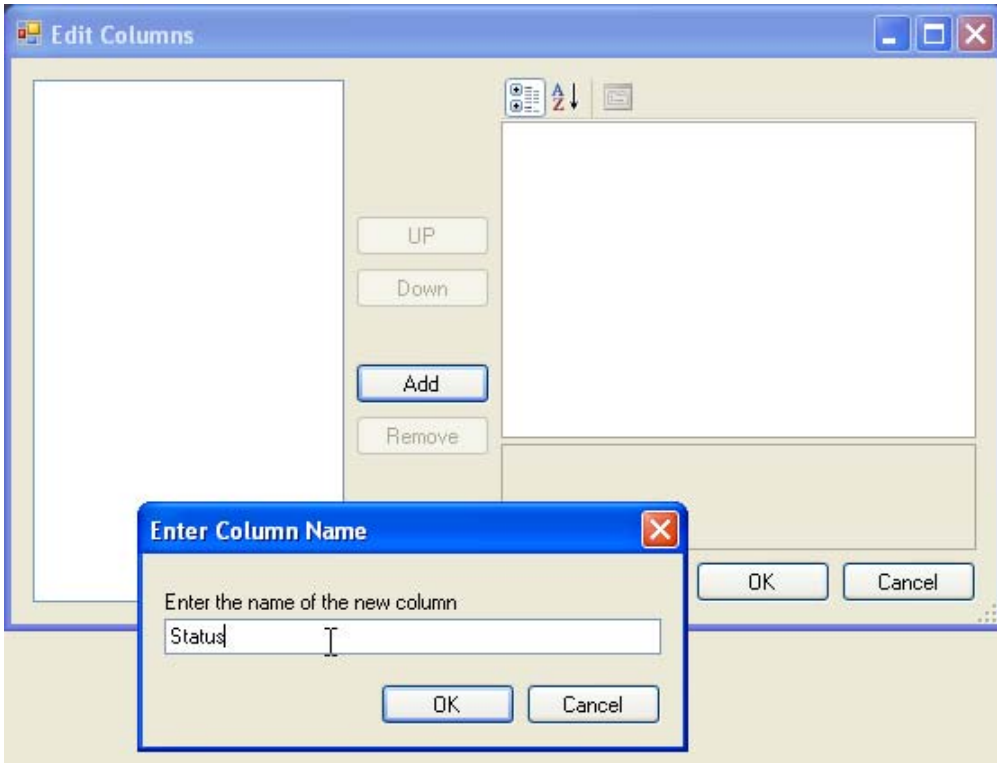
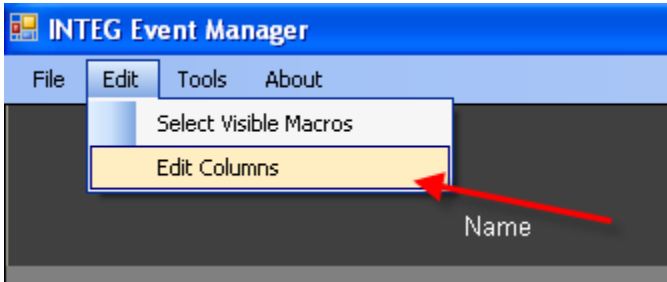
You can create any number of columns you want and they can have any title you want. **It is recommended that you have columns titled ‘Status’ and ‘Alert’ because Event Manager will automatically put certain messages into these columns. If these columns do not exist, the messages will go to the Miscellaneous column.** For example, ‘connected’ and the ‘intermission timer value’ will go into the Status column. The name of the macro started and the macro completed message generated by Cinema.JNIOR will

go into the Alert column. You can also add your own messages to these columns using the `Status = message` or `Alert= message` format.

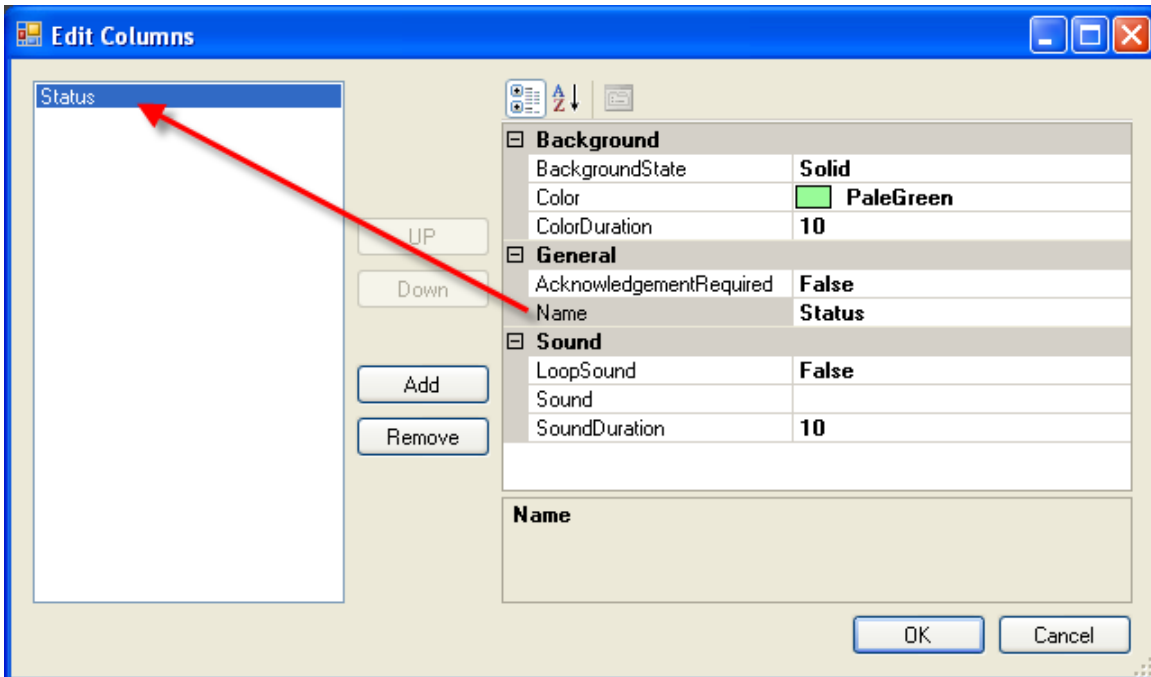
Cinema.JNIOR will put any message that comes to Event Manager with a column name that does not exist or a message that does not have a column name (default ones from Cinema.JNIOR) into the Miscellaneous column.

If you give the column name two parts (the two names are separated by an underscore), Event Manager will create two rows in the PC display. For example, Status will be a one row header, whereas Projector_Lamp will be displayed as a two row header. You can have multiple headers under one main header. For example, you could have Projector_Lamp, Projector_Dowser, Projector_Macro.

When you select the Edit Columns option under the Edit pull down, the following pop-up will be displayed. If you click on the Add button, a pop-up will be displayed to allow you to enter your column name.



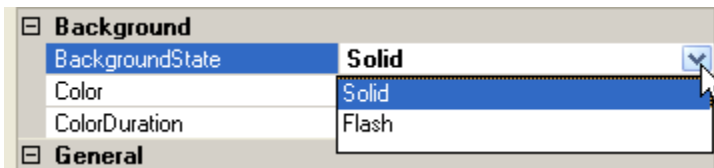
After you type in your column name and click OK, the following pop-up will be displayed to allow you to set various characteristics about the column.



Background

The Background set-up allows you to change the color of the cell when the ‘message’ for this column is first received. The cell will change to the color you have selected and remain that color for the duration that you have set. The default color is Pale Green and it will stay that color for 10 seconds.

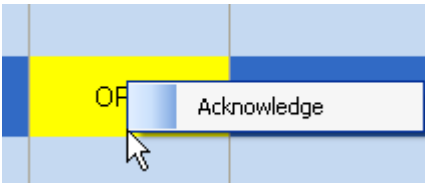
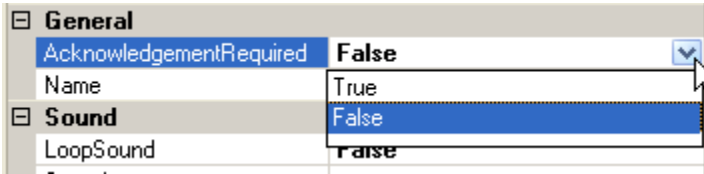
The Background State allows you to have the color be solid or flash for the time duration.



General

In the General set-up, you can change the name of the column and you can also set if the message (color or alarm sound) needs to be 'acknowledged'. If you set the Acknowledgement Required to TRUE, then when you 'right-click' on the cell in Event Manager, an Acknowledgement pop-up will be displayed. The color will remain or the sound will continue to play until the acknowledgement pop-up is clicked on.

When you click on 'acknowledge', the color will change to the background shade of blue or gray and the sound will stop playing.

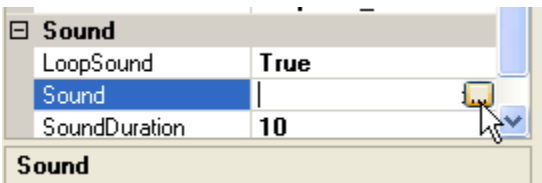


'Right-click on Cinema Manager page to get Acknowledge pop-up'

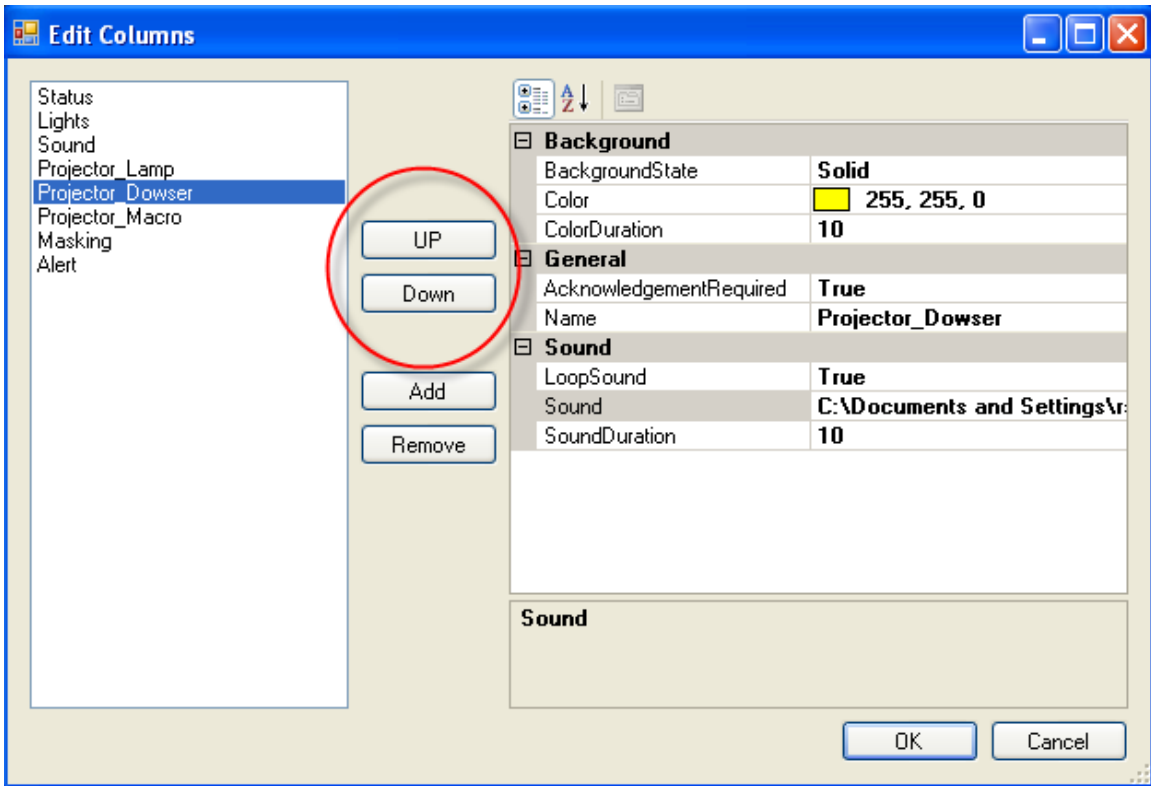
Sound

In the Sound set-up, you can select a sound to be played when the message is first displayed. You can add any 'wav' files that you want to use. Click in the Sound field and then click on the 'three dots' and a file selection box will be displayed. If you change the Loop Sound from false to true, the sound will be played over and over for the Sound Duration entered. The default duration is 10 seconds.

If you selected Acknowledgement Required (in General box), the sound will play until the 'acknowledgement' pop-up is clicked on in the cell in Event Manager.



After you have configured your columns, you can rearrange the column order on the display by using the Up and Down buttons in the middle of the configuration box as shown below.



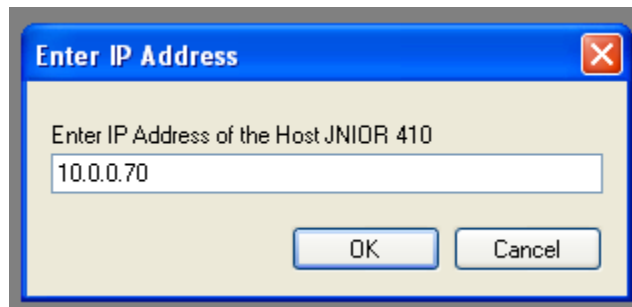
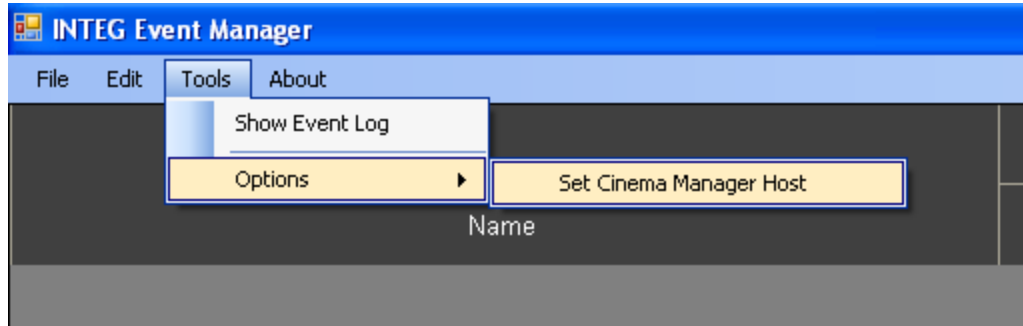
When you are done creating your columns and your JNIORs have connected to Event Manager and started sending messages, you can have a variety of colors as shown below.

Name	Status	Lights	Sound	Projector					
				Lamp	Dowser	Macro	Masking	Alert	Miscellaneous
CM_Auditorium_2	Preshow	Lights High	Non Sync	Lamp On	Dowser Open	Preshow	Flat	Lights Dim Success	
CM_Auditorium_3	Preshow	Lights High	Non Sync	Lamp On	Dowser Open	Preshow	Scope	Preshow Start Failed	
CM_Auditorium_4	Preshow Done	Lights High	digital		Dowser Closed	Movie	FLAT	Lights Dim Success	

JNIOR Model 410 – Event Manager Host

All of the JNIOR 310/312s will connect to a JNIOR Model 410 running the XChange software. The XChange software is licensed by INTEG. The software and license will be loaded by INTEG prior to shipment of the JNIOR Model 410.

You will need to enter the IP address of the JNIOR 410 into the Event Manager PC application. As shown below, you will go to Tools – Options – Set Cinema Manager Host and enter the IP address of the JNIOR 410.



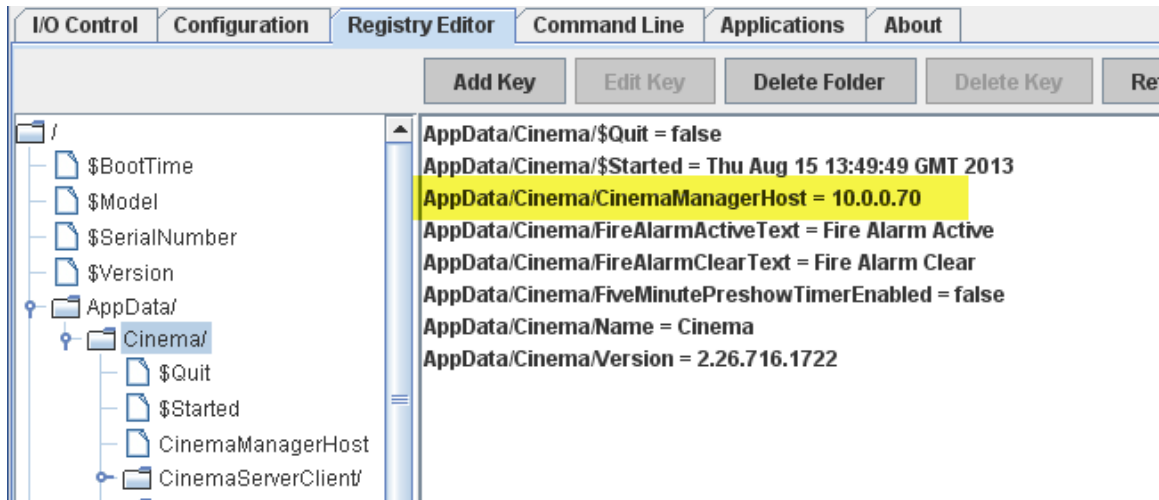
NOTE: All of the JNIOR 310/312 will connect to the JNIOR 410 and all of the Event Manager PC applications and web based devices will also connect to the JNIOR 410.

JNIOR Configuration

Please load the proper version of Cinema.JNIOR on your JNIOR using the JNIOR Support Tool. After the JNIOR is rebooted to start the new version, open the main JNIOR Web page, go to the Registry Editor tab, click on the AppData folder and then the Cinema folder and edit the CinemaManagerHost key. **Enter the IP address of the JNIOR Model 410 that is running the XChange application.** Below is a screen picture of the CinemaManagerHost registry key.

NOTE: Once you enter the IP address of the JNIOR 410 hosting the XChange application, you must reboot the JNIOR 310.

DO NOT PULL THE POWER. Go to the About tab and click on the Reboot button so that the JNIOR will save the configuration change properly.

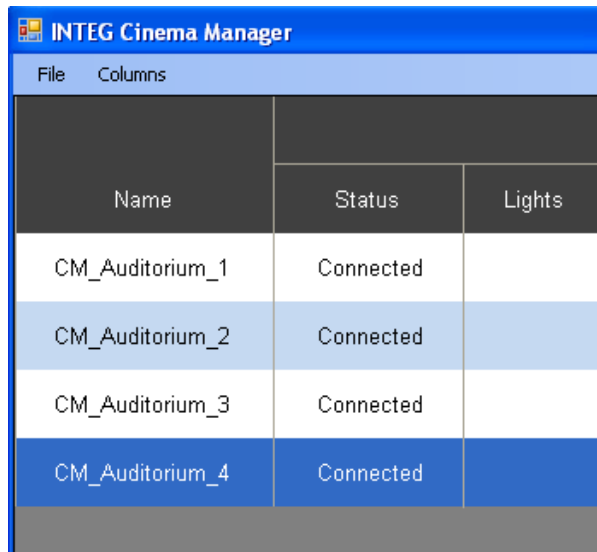


NOTE: If you change the Hostname for a JNIOR, it will not change in Event Manager until you close and re-launch the Event Manager PC application.

As shown below, each JNIOR will connect to Event Manager and the message 'connected' will show up in the Status column.



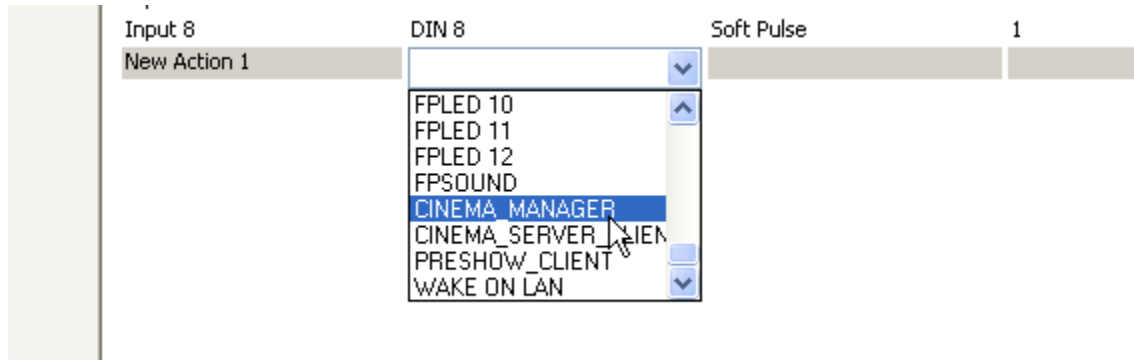
You can ‘left-click’ on a JNIOR in the NAME column and drag it up or down in the list to change the order of the JNIORS. The new order will be remembered by Event Manager. Below is a picture of a re-ordered list when compared to the previous screen picture.



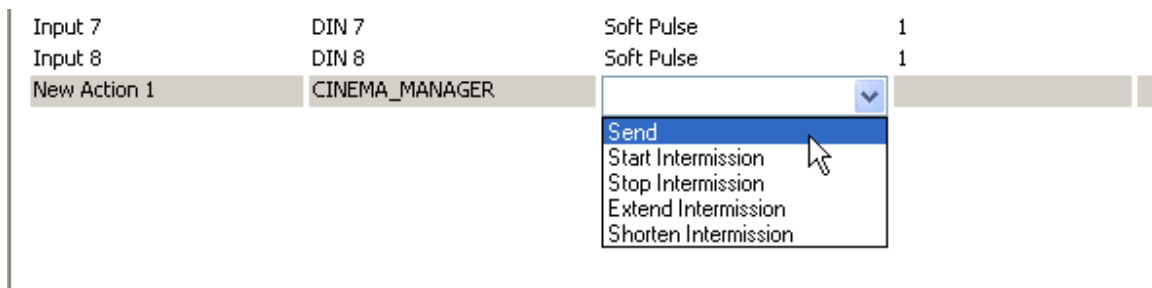
Building your Macros

In order to get status messages in Event Manager, you must build them into your macros so that when a specific action is executed, a message is sent to Event Manager and placed into the appropriate column.

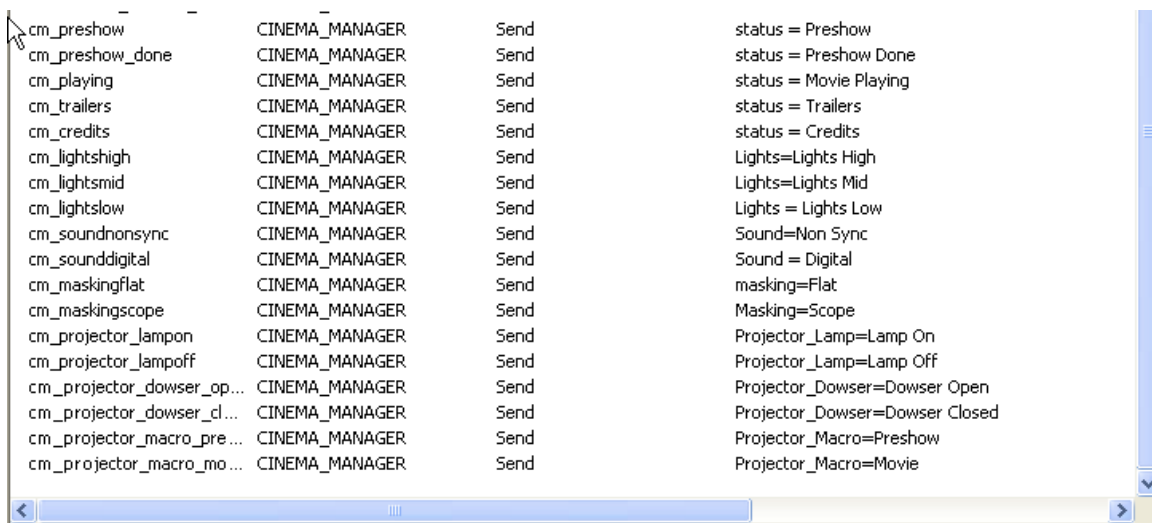
The JNIOR Support Tool has been updated to include a new ‘internal’ device called CINEMA MANAGER. When you add a new device, CINEMA MANAGER is an option you can select as shown below.



When you select CINEMA_MANAGER, you will see the SEND command that sends the data message to the Event Manager application. You will also see several commands associated with the Intermission function that are described later in this document.



You build your actions with as many messages as you want to send. The information in the Data column follows the format Column Name = Message. Below is a screen picture of a variety of 'status messages'.



You can also send multiple messages as part of one Send.

cm_projector_macro_pre...	CINEMA_MANAGER	Send	Projector_Macro=Preshow
cm_projector_macro_mo...	CINEMA_MANAGER	Send	Projector_Macro=Movie
cm_multiple	CINEMA_MANAGER	Send	status=Movie;Lights=Low;Masking=Scope

The following are some typical macros that integrate the Cinema Manager status messages amongst the various actions in a macro. The macro executes the action and sends the associated message.

You can have the timing of the actions and messages spaced out over time.

Macro View

Macro Name	Timing	Action Description
[-] Preshow Start		
cm_preshow	00:00	CINEMA_MANAGER Send status = Preshow
Full Bright	00:01	ROUT 3 Close Pulse 1 sec(s)
cm_lightshigh	00:02	CINEMA_MANAGER Send Lights=Lights High
Preshow Projector...	00:03	Projector Send Macro Preshow
cm_projector_ma...	00:04	CINEMA_MANAGER Send Projector_Macro=P
Projector Lamp On	00:05	Projector Lamp On
cm_projector_lam...	00:06	CINEMA_MANAGER Send Projector_Lamp=L
Projector Open D...	00:07	Projector Open Dowser
cm_projector_do...	00:08	CINEMA_MANAGER Send Projector_Dowser ..
JSD100 Non Sync	00:09	JSD100 Set Input 8
cm_soundnonsync	00:10	CINEMA_MANAGER Send Sound=Non Sync

Or you can have the action and message at the same time interval. The JNIOR will send them out as fast as it can, but placing them at the same time interval may help with keeping the action and message together for viewing purposes.

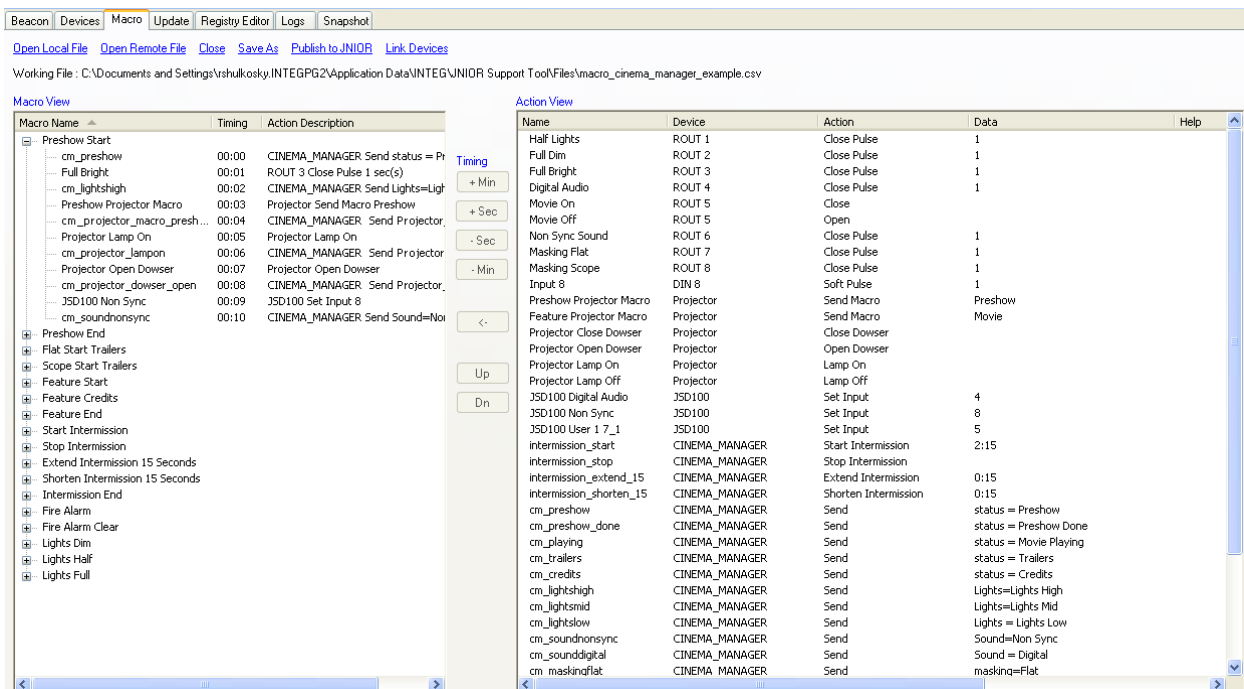
Macro View

Macro Name	Timing	Action Description
[+] Preshow Start		
[+] Preshow End		
[-] Flat Start Trailers		
cm_trailers	00:00	CINEMA_MANAGER Send status = Trailers
Movie On	00:01	ROUT 5 Close
Half Lights	00:02	ROUT 1 Close Pulse 1 sec(s)
cm_lightsmid	00:02	CINEMA_MANAGER Send Lights=Lights Mid
cm_maskingflat	00:03	CINEMA_MANAGER Send masking=Flat
Masking Flat	00:03	ROUT 7 Close Pulse 1 sec(s)
Digital Audio	00:05	ROUT 4 Close Pulse 1 sec(s)
cm_sounddigital	00:05	CINEMA_MANAGER Send Sound = Digital

The macros can be defined as multiple actions as shown above or as simple single actions as shown below.

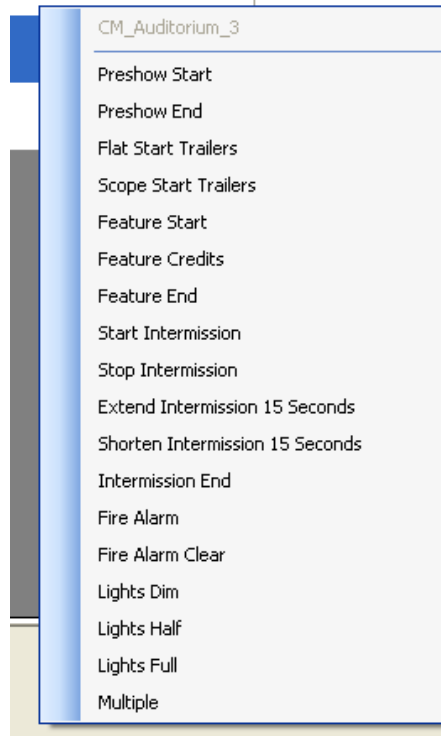
Lights Dim			
Full Dim	00:00	ROUT 2 Close Pulse 1 sec(s)	
cm_lightslow	00:01	CINEMA_MANAGER Send Lights = Lights Low	
Lights Half			
Half Lights	00:00	ROUT 1 Close Pulse 1 sec(s)	
cm_lightsmid	00:01	CINEMA_MANAGER Send Lights=Lights Mid	
Lights Full			
Full Bright	00:00	ROUT 3 Close Pulse 1 sec(s)	
cm_lightshigh	00:01	CINEMA_MANAGER Send Lights=Lights High	

Below is a picture of the entire macro file.



Executing Macros from Event Manager

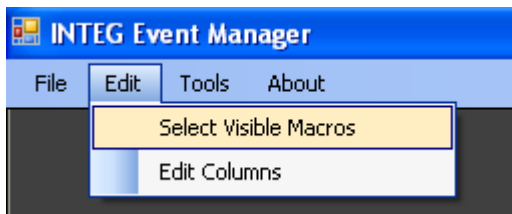
When Event Manager is connected to a JNIOR, all the macros loaded on the JNIOR can be executed from Event Manager by ‘right-clicking’ on the JNIOR name.

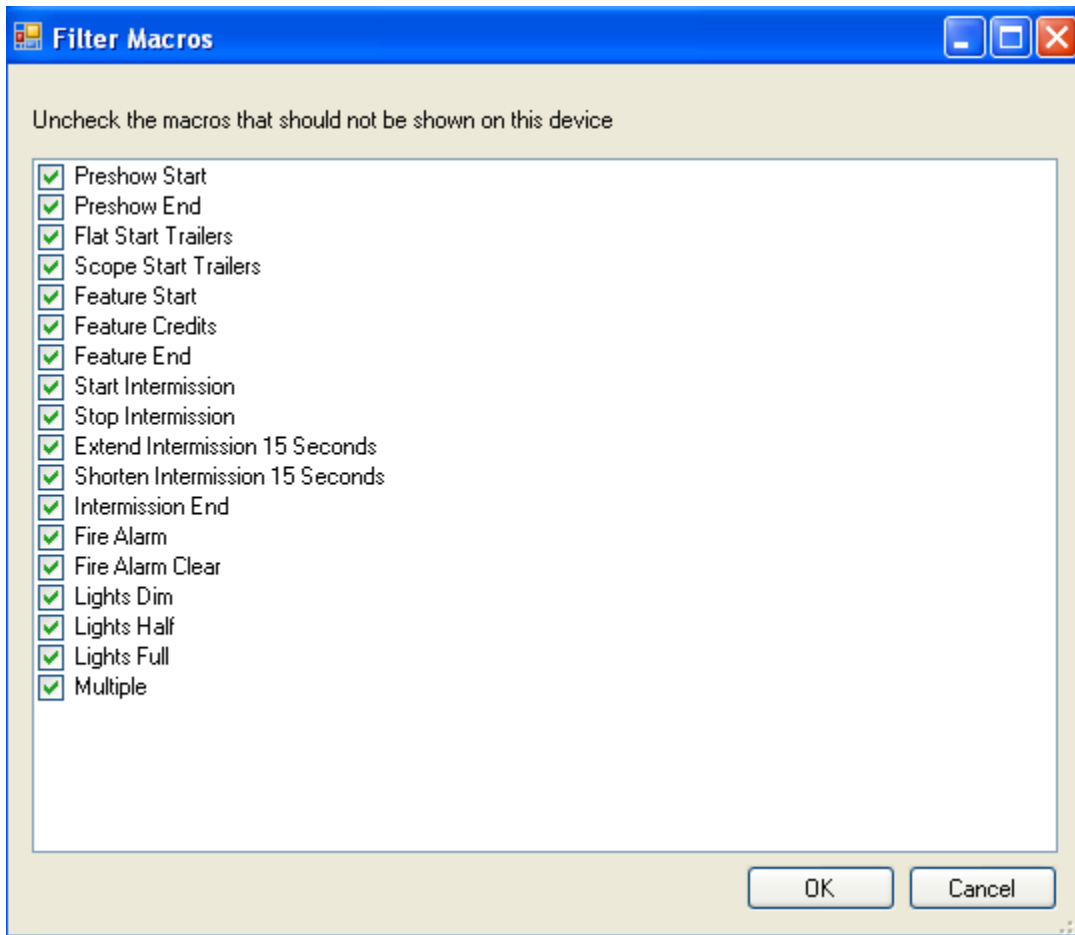


Macro Filter

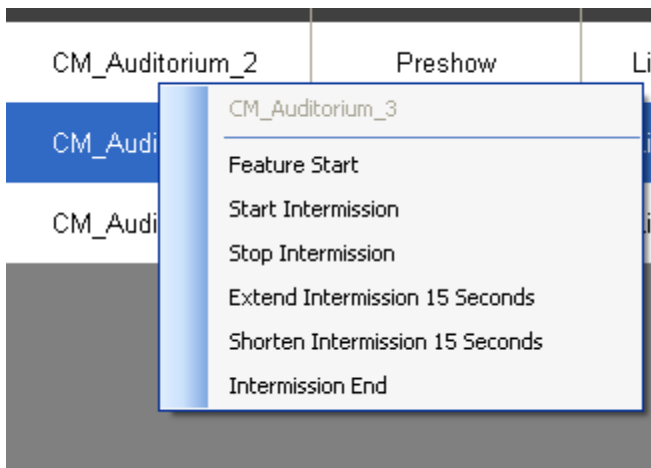
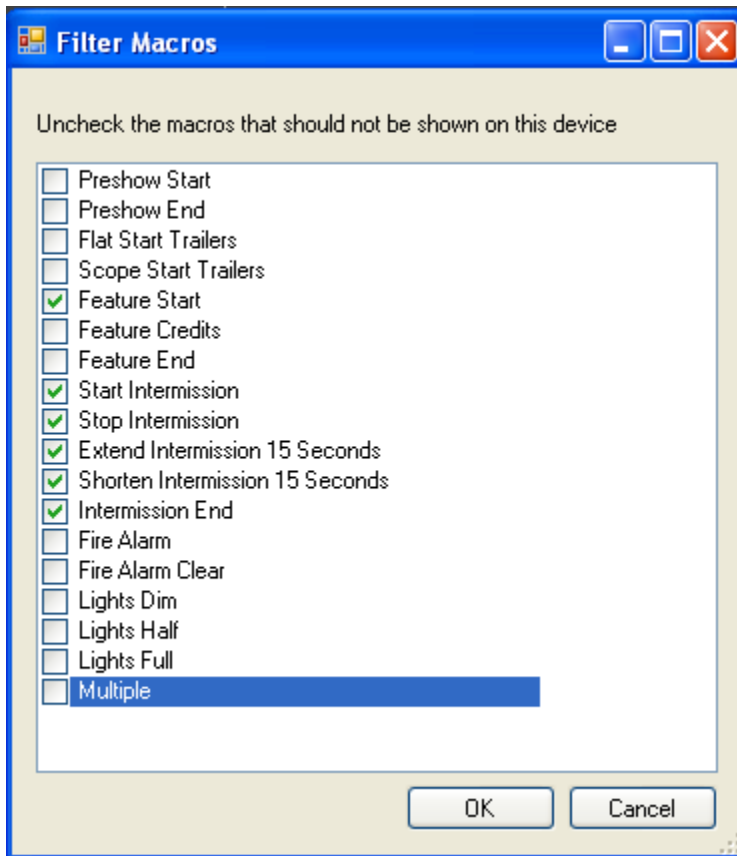
You can select which macros can be executed from a specific Event Manager PC. Each JNIOR will have a set of macros and typically all the JNIORs will have the same macros. However, each JNIOR can have different macros.

By clicking on the Macros pull down and then Select Visible Macros, Event Manager will display a list of all the macros available. The list will include all the macros from all the JNIORs.



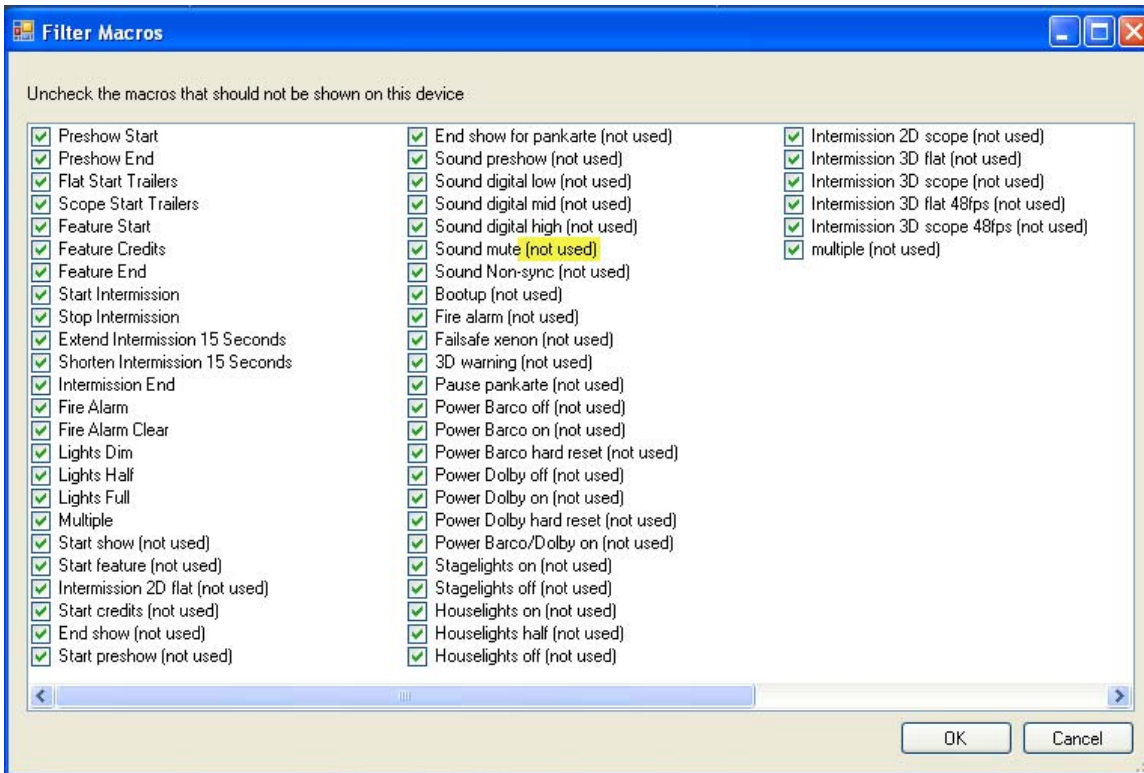


By selecting which macros you want the user of this Event Manager installation to be able to utilize, the macro selection list will be reduced.

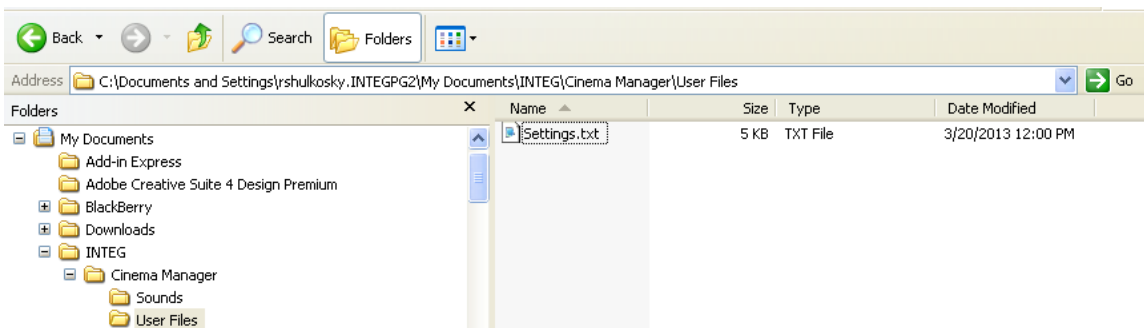


If a JNIOR has been disconnected or is not reporting to Event Manager, this may result in macros that are not currently being used since they only existed on that JNIOR. If you go

to Select Visible Macros pull down again, the pop-up box will put the “not used” text next to macros that were at one time available.



NOTE: Event Manager does not automatically delete these macro names in case the JNIOR that is not available should become available again. To delete these names, you would currently have to open the Settings.txt file using Notepad and delete the old macro names. This file is located in the My Documents folder as shown below.



When the macros are executed manually from Event Manager or automatically by the preshow system, digital cinema server or any other method, the status messages will be sent to Event Manager as the macro is executed. When the status message is received,

the box will turn colors and stay solid or flash for the time duration configured. A list of all the messages sent by the JNIOR to Event Manager will be listed in the bottom portion of Event Manager. Click on the JNIOR name to display the appropriate messages at the bottom of the display.

The screenshot displays the INTEG Cinema Manager application window. The main area is a table with the following data:

Name	Status	Lights	Sound	Projector				Miscellaneous
				Lamp	Dowser	Macro	Masking	
CM_Auditorium_1	Preshow	Lights High	Non Sync	Lamp On	Dowser Open	Preshow		Preshow Start Success
CM_Auditorium_2	Preshow Done	Lights High	Non Sync	Lamp On	Dowser Open	Movie		Preshow End Success
CM_Auditorium_3	Trailers	Lights Mid	Digital	Lamp On	Dowser Open	Preshow	Flat	Flat Start Trailers Started...
CM_Auditorium_4	Credits	Lights Mid	Digital	Lamp On	Dowser Open	Movie	Scope	Feature Credits Success

Below the table, a log window shows a list of messages. A red text overlay in the center of the log reads: "Shows history of messages received by Cinema Manager". The log messages include:

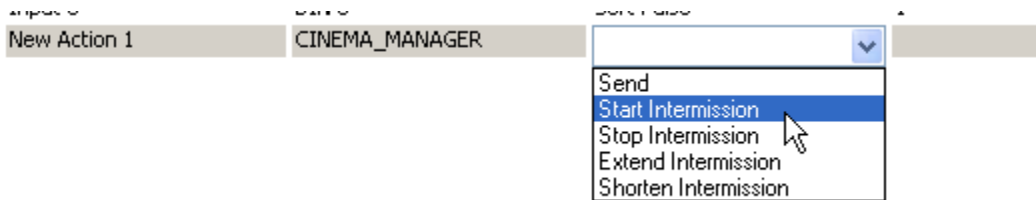
```

211016760 CM_Auditorium_4 10.0.0.246
02/20/2013 17:52:49: Flat
02/20/2013 17:52:47: Lights Mid
02/20/2013 17:52:45: Trailers
02/20/2013 17:52:44: Flat Start Trailers Started...
02/20/2013 17:52:40: Credits
02/20/2013 17:52:39: Feature Credits Started...
02/20/2013 17:51:58: Feature Start Success
02/20/2013 17:51:57: Lights Low
02/20/2013 17:51:55: Movie Playing
02/20/2013 17:51:54: Feature Start Started...
02/20/2013 17:51:51: Trailers
02/20/2013 17:51:51: Flat Start Trailers Started...
02/20/2013 17:51:37: Preshow Start Success
02/20/2013 17:51:36: Non Sync
02/20/2013 17:51:34: Dowser Open
192.168.1.22, 10.0.0.127
    
```

Intermission Logic

The latest Cinema.JNIOR program includes intermission logic which can also be used for any timed event. It works by having the digital cinema server trigger the ‘intermission start’ macro on the JNIOR. This macro can be any name, but it must have the ‘start intermission’ action. **The start intermission action also contains a user defined time duration for the intermission and the macro to execute when the intermission is complete.** Once the intermission is started, a timer will be displayed in Event Manager in the status column. When the intermission timer reaches 0, the end of intermission macro will be executed. The user can extend, shorten or stop the intermission from Event Manager by running the appropriate macro.

Below are the ‘actions’ associated with the intermission logic.



Below are typical ‘actions’. The data in the right most column can be any number using the format minutes:seconds. For the Start Intermission action, the intermission duration and the macro to execute when intermission is complete must be separated by a ; (semi-colon).

intermission_start	CINEMA_MANAGER	Start Intermission	2:15;Intermission End
intermission_stop	CINEMA_MANAGER	Stop Intermission	
intermission_extend_15	CINEMA_MANAGER	Extend Intermission	0:15
intermission_shorten_15	CINEMA_MANAGER	Shorten Intermission	0:15

separated by ; semi-colon

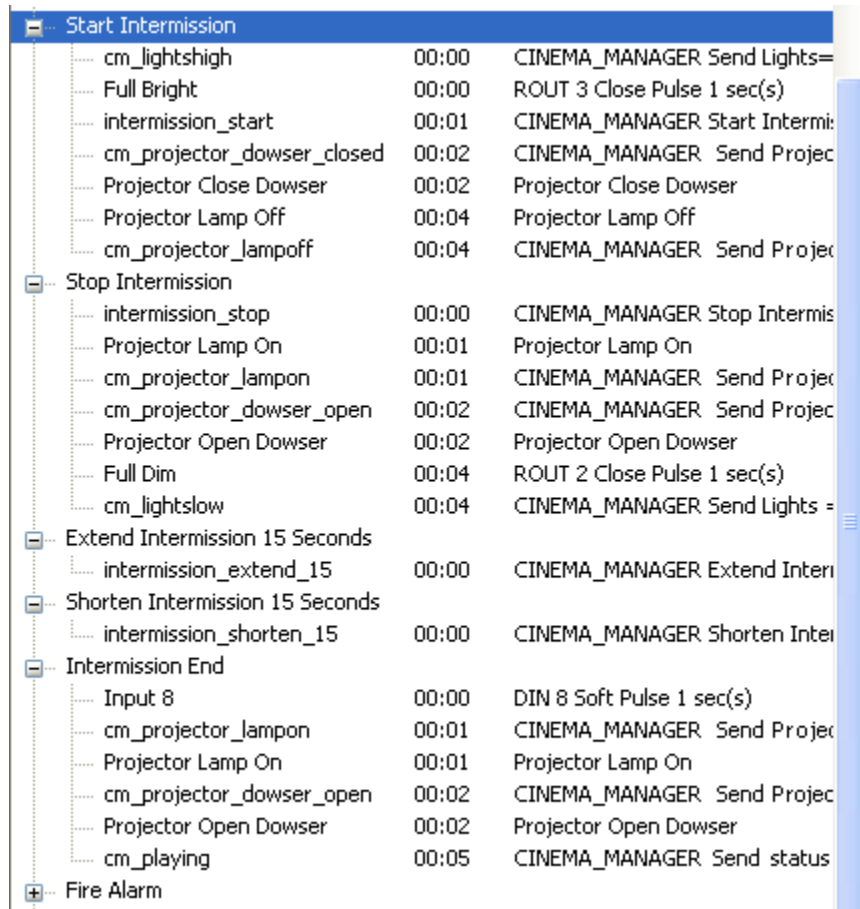
Below are example macros that can be used to with the intermission logic.

Start Intermission – the macro initiated by the digital cinema player and contains the Start Intermission action.

Stop Intermission – the macro executed manually from Event Manager to immediately stop the intermission. The macro to execute at the end of intermission will be automatically executed.

Extend Intermission and **Shorten Intermission** – the macros executed manually from Event Manager to extend or shorten the intermission. These macros can be run multiple times to extend or shorten the intermission by the amount of time set in the data column.

Intermission End – the macro automatically executed when the intermission timer reaches 0 or the Stop Intermission macro is executed. The macro is defined as part of the Start Intermission action.



Below is a picture of Event Manager showing the Intermission timer.

Name	Status	Lights	Sound	Projector			Masking	Miscellaneous
				Lamp	Dowser	Macro		
CM_Auditorium_1	Preshow	Lights High	Non Sync	Lamp On	Dowser Open	Preshow		Preshow Start Success
CM_Auditorium_2	Trailers	Lights Mid	Digital	Lamp On	Dowser Open	Movie	Flat	Flat Start Trailers Success
CM_Auditorium_3	Movie Playing	Lights Low	Digital	Lamp On	Dowser Open	Preshow	Scope	Feature Start Success
CM_Auditorium_4	Intermission (2:00)	Lights High	Digital	Lamp Off	Dowser Closed	Preshow	Scope	Start Intermission Success

When the timer reaches 0, the macro defined in the Start Intermission action will automatically execute as shown below.

CM_Auditorium_3	Movie Playing	Lights Low	Digital	Lamp On	Dowser Open	Preshow	Scope	Feature Start Success
CM_Auditorium_4	Intermission Complete	Lights High	Digital	Lamp Off	Dowser Closed	Preshow	Scope	Intermission End Started...

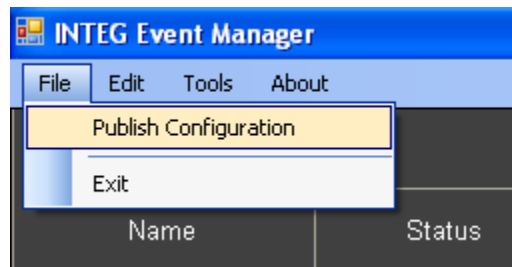
Web Based Event Manager

The Event Manager screen also has a web based version that is loaded on the JNIOR Model 410.

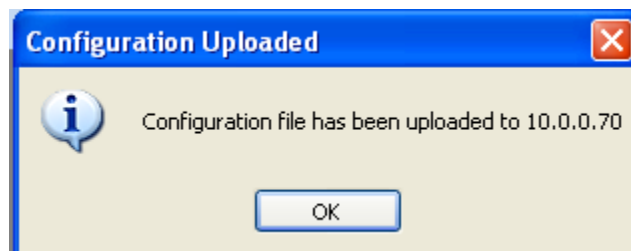
NOTE: In order to view this web screen you MUST be using Google Chrome, Firefox or Internet Explorer 10 (or greater). You need a ‘modern Web Browser’

After you have configured your Event Manager PC application with all your columns, you must ‘publish’ this configuration to the JNIOR Model 410 so that web applications will have the proper information.

As shown below, go to File – Publish Configuration



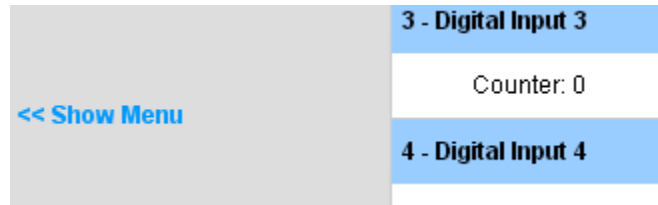
When the ‘publish’ is complete, the following pop-up box will appear and it will contain the IP address of the JNIOR Model 410.



You can then launch the Event Manager Web Application from any modern browser by typing in the IP address of your JNIOR Model 410 followed by /Events.

Example: 10.0.0.70/Events

Or you can open the main JNIOR web page and then click on the Show Menu link on the left side of the main JNIOR web page as shown below:

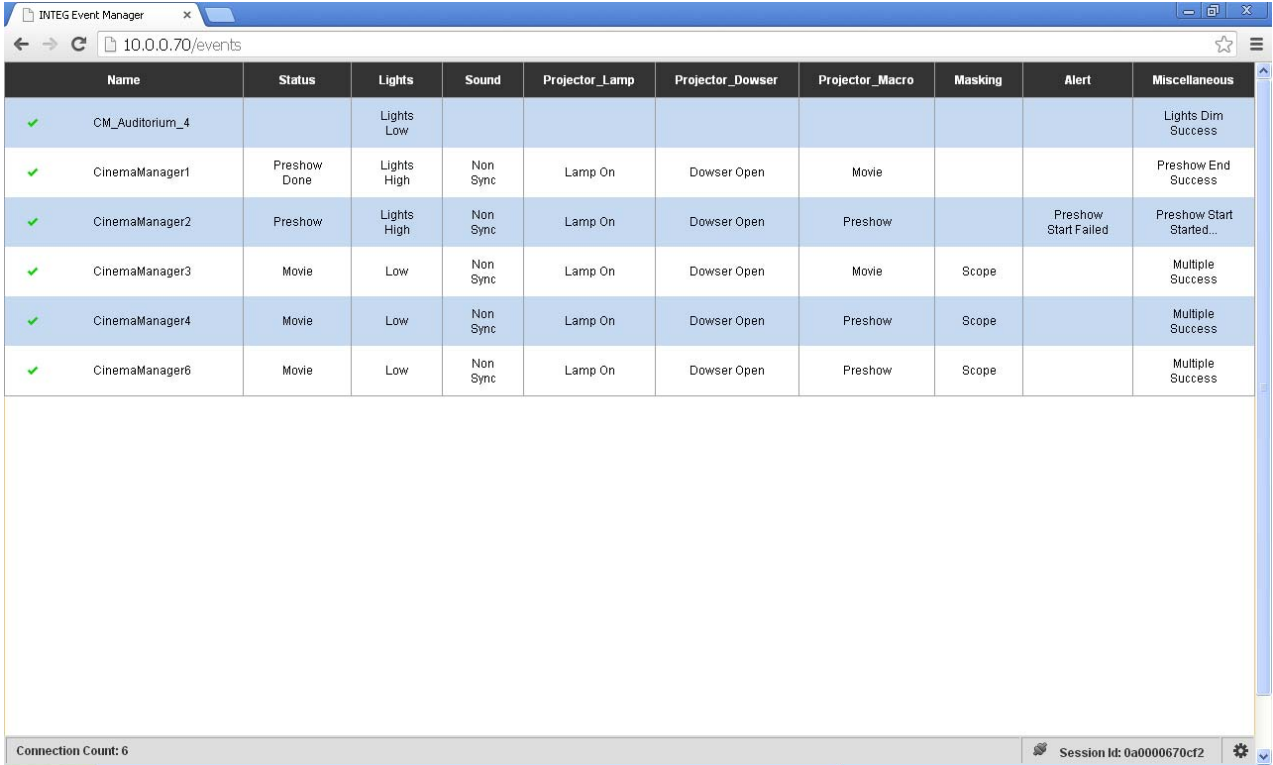


And if Event Manager is available on that JNIOR, you will see a link to launch the Event Manager web page as shown below. Please click on the Event Manager link.

NOTE: Only 1 JNIOR Model 410 (or Model 412) in a theatre complex will have the XChange software that is part of Event Manager. Therefore, only this JNIOR will have the Event Manager web page.



The following web page will be displayed.

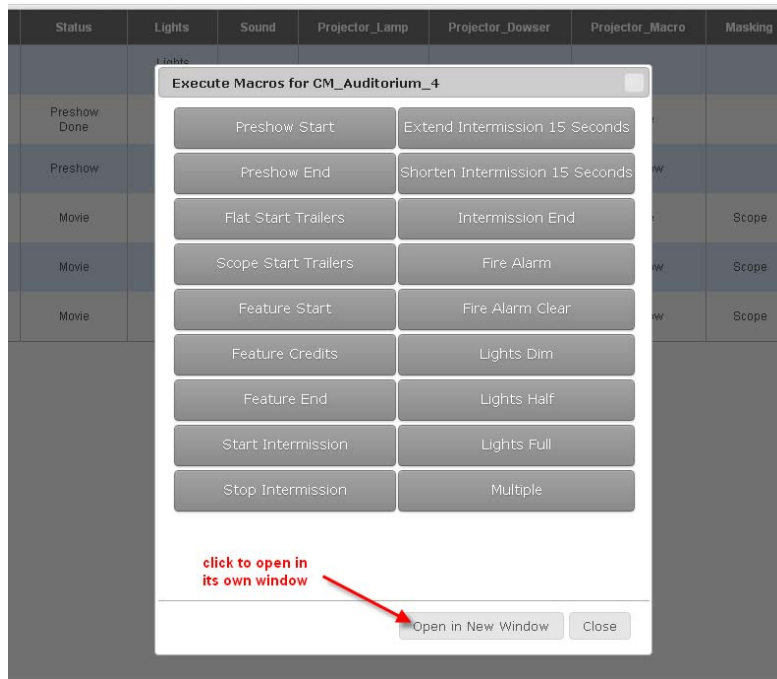


The screenshot shows a web browser window titled "INTEG Event Manager" with the URL "10.0.0.70/events". The main content is a table with the following columns: Name, Status, Lights, Sound, Projector_Lamp, Projector_Dowser, Projector_Macro, Masking, Alert, and Miscellaneous. The table contains six rows of data, each with a green checkmark in the Name column.

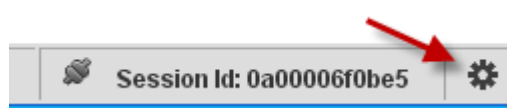
Name	Status	Lights	Sound	Projector_Lamp	Projector_Dowser	Projector_Macro	Masking	Alert	Miscellaneous
CM_Auditorium_4		Lights Low							Lights Dim Success
CinemaManager1	Preshow Done	Lights High	Non Sync	Lamp On	Dowser Open	Movie			Preshow End Success
CinemaManager2	Preshow	Lights High	Non Sync	Lamp On	Dowser Open	Preshow		Preshow Start Failed	Preshow Start Started...
CinemaManager3	Movie	Low	Non Sync	Lamp On	Dowser Open	Movie	Scope		Multiple Success
CinemaManager4	Movie	Low	Non Sync	Lamp On	Dowser Open	Preshow	Scope		Multiple Success
CinemaManager6	Movie	Low	Non Sync	Lamp On	Dowser Open	Preshow	Scope		Multiple Success

At the bottom of the browser window, there is a status bar with "Connection Count: 6" on the left and "Session Id: 0a0000670cf2" on the right.

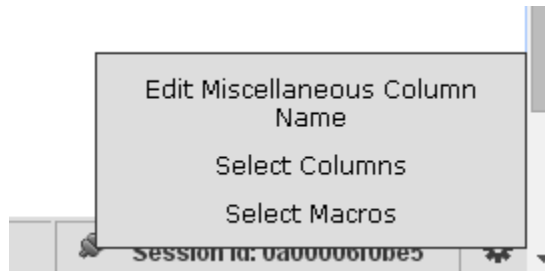
And if you 'left-click' on one of the JNIORs listed in the first column, a window will pop-up so you can execute macros. The window will contain buttons representing each of the macros on that JNIOR.



In the lower right corner of the Event Manager web page is an icon that you can click on to bring up a window of several configuration items for the web page.



Clicking on the icon will display the following pop-up window.

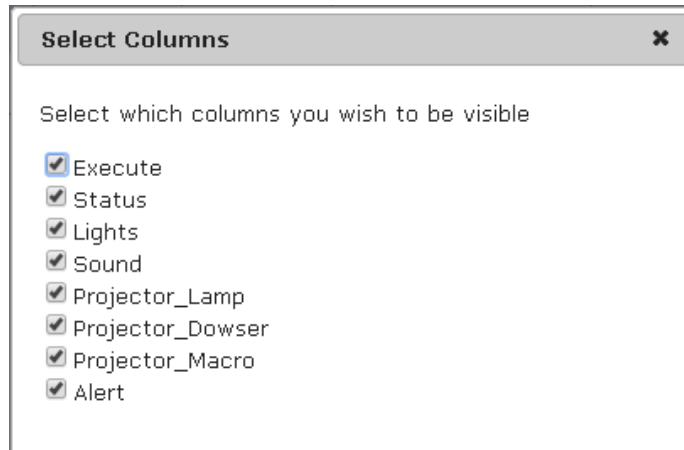


You can choose any of these items to change the configuration of the web page being displayed from the JNIOR.

NOTE: The changes will ONLY affect the webpage view for this PC. It will NOT change the set-up when the web page is viewed from another PC or device.

Edit Miscellaneous Column Name – changes the name of the last column which is a default column always available within Event Manager to receive standard messages and messages received without an available column name.

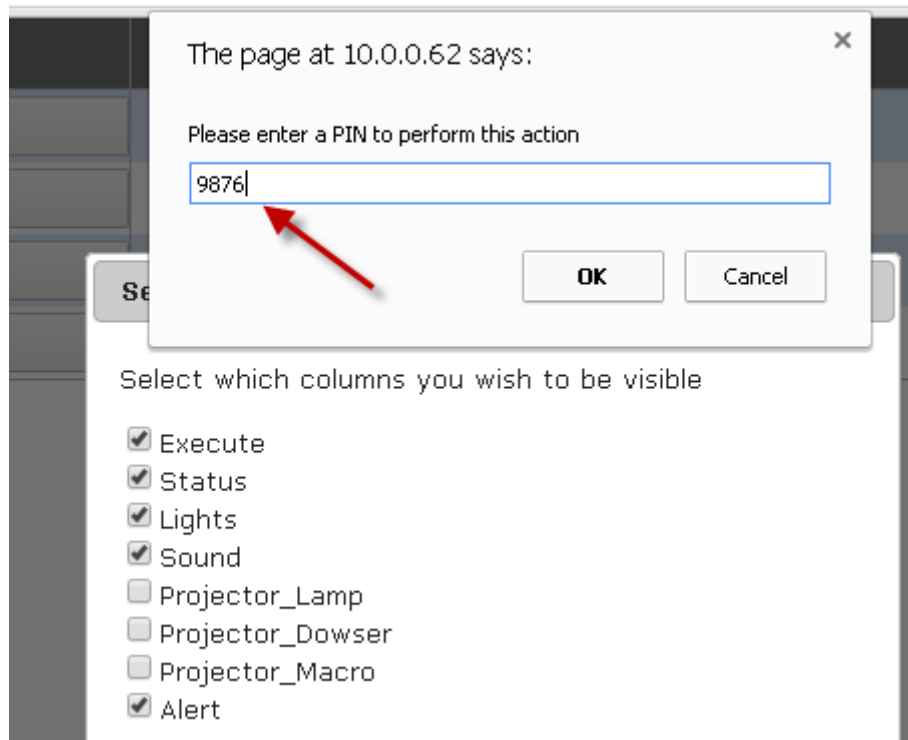
Select Columns – allows you to ‘check’ which columns will be available to view from this PC. By default, all are selected.



When you make a change, you will be asked to enter a password or PIN (personal identification number).

The default PIN is 9876

This number cannot be changed.



Select Macros – you can control which macros will be available for execution from this device. The list contains ALL the macros from ALL the JNIORS being displayed. You will be required to enter the PIN to complete the change.

